

APV Plate Heat Exchanger

NR5 R-15



The NR5 R-15 Paraflow Plate Heat Exchanger is available in five frame sizes and with over 800 NR5 plates. Three leg types are available offering lower port heights up to 38" (965 mm). This flexibility enables a simple drop-in for existing machine replacement.

The NR5 R-15 is well suited to high capacity HTST duties in the dairy, brewery and liquid food industries.

NR5 R-15 frames are supplied with eight tie bars and able to accommodate NR5, R5 and ER5 plates. Frames are shipped with head tightening but can easily be reconfigured to permit follower tightening. Equipped with maximum platage, the frame offers 5,000 ft² (460 m²) of heat transfer surface.


FRAME DESIGN FEATURES

- **Frame Size:** 5 frame lengths
- **Frame Construction:** Stainless steel clad
- **Frame Finish:** Polished
- **Tie Bars:** Stainless steel
- **Maximum Design Pressure:** 217 psi (15 bar). The pressure depends upon plate material, working temperatures, process conditions and local regulations. For additional details, refer to the application performance specifications supplied with your APV quotation.
- **Operating Temperatures:** Up to 392°F (200°C) depending on gasket material. Higher temperatures may be allowed depending on application.
- **Connections:** 4" (102 mm) *Tri-Clamp and other sanitary fittings

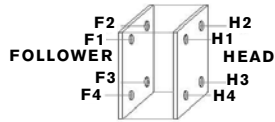
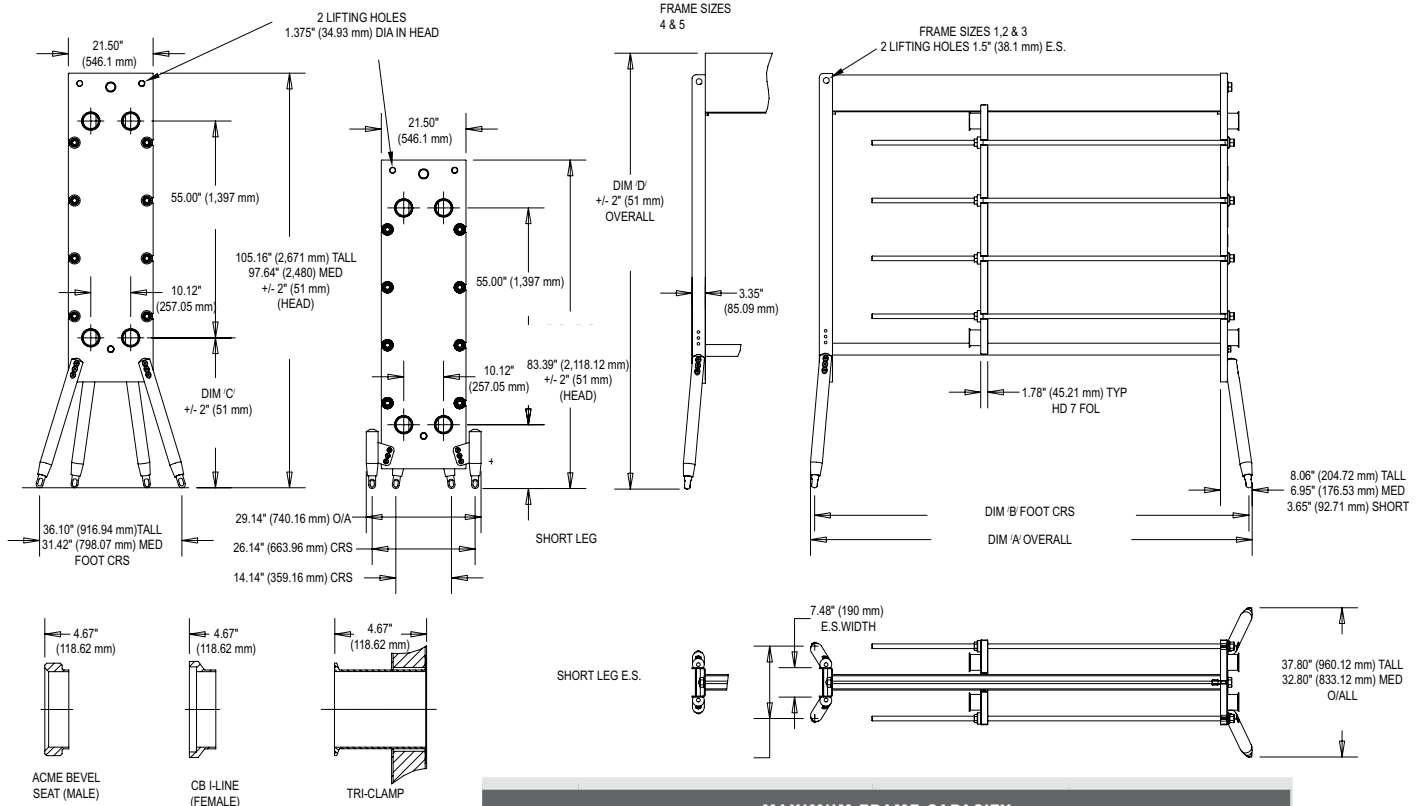
PLATE DESIGN FEATURES

- **Plate Types:** NR5, R5, ER5, NU5
- **Plate Materials:** 316 Stainless steel, high Nickel alloys and other corrosion resistant materials
- **Gasket Materials:** NBR, EPDM, Fluoroelastomers and others
- **Gasket Fixing:** Easyclip (NR5), Paraclip (R5/ER5) adhesive free. Glued options available
- **Maximum Flow Rate:** 750 gpm (170 m³/hr)
- **Heat Transfer Area/Plate:** NR5/NU5 = 5.84 ft², (0.54 m²)
R5 = 5.60 ft² (0.52 m²), ER5 = 5.67 ft² (0.53 m²)
- **Plate Liquid Capacity/Fluid Channel:** NR5/NU5 = 0.53 gal (2.00 L), R5/ER5 = 0.72 gal (2.72 L)

ADDITIONAL OPTIONAL FEATURES:

- Optional stainless steel protective plate pack shroud
- Intermediate grids - 5.87" wide (149 mm) with bosses - 4" (102 mm) connections
- The ER5 is essentially a Freeflow plate with very few contact points and like other Freeflow plates should only be operated with low working pressures, not exceeding 120 psi (8 bar), and controlled fluctuations.
- Authorized 
- Available as Certified ASME Sec. VIII, Div. 1 Design

APV NR5 R-15 PLATE HEAT EXCHANGER DIMENSIONS



MAXIMUM FRAME CAPACITY			
FRAME SIZE	MAX. PLATAGE DIM. IN (MM)	NR 5 0.6 MM PLATES	R5/ER5 0.9 MM PLATES
		MAXIMUM PLATE QUANTITY	
1	42.36 (1,076)	179	145
2	81.73 (2,076)	345	281
3	121.10 (3,076)	512	417
4	160.47 (4,076)	679	553
5	199.84 (5,076)	845	688

FRAME SIZE	TALL LEG					MEDIUM LEG					SHORT LEG				
	NET WEIGHT LBS (KG) (NO PLATES)	DIMENSIONS IN INCHES (MM)				NET WEIGHT LBS (KG) (NO PLATES)	DIMENSIONS IN INCHES (MM)				NET WEIGHT LBS (KG) (NO PLATES)	DIMENSIONS IN INCHES (MM)			
		A OVERALL LENGTH	B FOOT CENTERS	C PORT HEIGHT	D OVERALL HEIGHT		A OVERALL LENGTH	B FOOT CENTERS	C PORT HEIGHT	D OVERALL HEIGHT		A OVERALL LENGTH	B FOOT CENTERS	C PORT HEIGHT	D OVERALL HEIGHT
1	2,116 (960)	72.68 (1,846)	70.83 (1,799)	38.00 (965)	105.16 (2,671)	2,050 (930)	70.91 (1,801)	69.06 (1,754)	30.51 (775)	97.64 (2,480)	1,997 (906)	67.05 (1,703)	62.95 (1,599)	16.22 (412)	83.39 (2,118)
2	2,348 (435)	112.05 (2,846)	110.20 (2,799)			2,282 (1,035)	110.28 (2,801)	108.43 (2,754)			2,229 (1,011)	106.42 (2,703)	102.32 (2,599)		
3	2,582 (1,171)	151.42 (3,846)	149.57 (3,799)			2,515 (1,141)	149.65 (3,801)	147.80 (3,754)			2,463 (1,117)	145.79 (3,703)	141.69 (3,599)		
4	2,983 (1,353)	190.79 (4,846)	188.94 (4,799)	110.51 (2,807)		2,917 (1,323)	189.02 (4,801)	187.17 (4,754)		103.00 (2,616)	2,864 (1,299)	185.16 (4,703)	181.06 (4,599)		88.70 (2,253)
5	3,252 (1,475)	230.16 (5,846)	228.31 (5,799)			3,186 (1,445)	228.39 (5,801)	226.54 (5,754)			3,133 (1,421)	224.53 (5,703)	220.43 (5,599)		

Based in Charlotte, North Carolina, SPX FLOW, Inc. (NYSE: FLOW) is a multi-industry manufacturing leader. For more information, please visit www.spxflow.com

SPXFLOW

SPX FLOW 611 Sugar Creek Road Delavan, WI 53115
P: (262) 728-1900 or (800) 252-5200 E: answer.us@spxflow.com

SPX FLOW, Inc. reserves the right to incorporate our latest design and material changes without notice or obligation.

Design features, materials of construction and dimensional data, as described in this bulletin, are provided for your information only and should not be relied upon unless confirmed in writing. Please contact your local sales representative for product availability in your region. For more information visit www.spxflow.com.

The green "S" and "X" are trademarks of SPX FLOW, Inc.

ISSUED 03/2017 1119-01-02-2009-US

COPYRIGHT © 2017 SPX FLOW, Inc.