

QF1200S

Quaternary Diaphragm Pumps

Multiple-Use

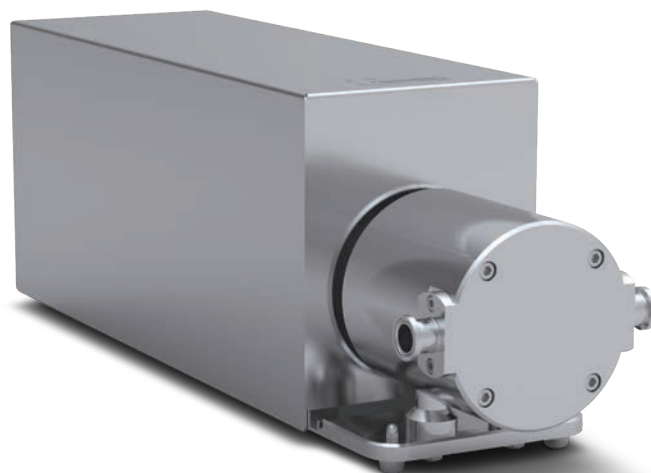
- Separate control box for manual operation available
- ATEX version available

Technical Data

QF1200S Standard Motor		
Flow Rate Maximum:	Eccentric Shaft 3°	800 lph (13.3 lpm)
	Eccentric Shaft 5°	1200 lph (20 lpm)
Flow Rate Minimum*:	Eccentric Shaft 3°	10 lph (0.167 lpm)
	Eccentric Shaft 5°	20 lph (0.333 lpm)
Pressure:	Temperature of Fluid < 40° C (104° F)	6 bar (87 psi)
	Temperature of Fluid > 40° C (104° F)	4 bar (58 psi)
Maximum Temperature:	Fluid	80° C (176° F)
	CIP	90° C (194° F)
	SIP	130° C (266° F)
	Autoclave	130° C (266° F)
Pump Speed Range:	rpm	30 - 2,400
Suction Lift Dry at 1800 rpm:	Eccentric Shaft 3°	2.5 - 3 m (8.2-9.8 ft)
	Eccentric Shaft 5°	4 - 4.5 m (13.1-14.7 ft)
Volume Specifications:	Approximated Volume per Revolution at Free Output	9.6 ml (5°)
	Filling Volume Without Connectors	5.8 ml (3°)
Connection Specification (Standard):	Connectors	3/4" TC
	Position of Connectors	Inline
	Number of Flow Directions	4
Product Wetted Materials (Standard):	Pump Housing	SS316L
	Valve Plate	SS316L
	Diaphragms	TPE
	Valves	EPDM
Certificates/ Proofs (Optional):	O-rings	EPDM
	Elastomere (product wetted)	USP <88> Cl. VI; FDA21CFR177; BSE/TSE Safe
Motor (Standard):	Stainless Steel Parts (product wetted)	3.1; Surface Roughness; Ferrite Content
	Rated speed	1375 min-1 (50 Hz)
Pump Dimension with Motor and Housing:	Voltage	230/400 V
	Power	0.37 kW
Pump Dimension with Motor and Housing:	Length	487 mm (19.17")
	Width	159 mm (6.26")
	Height	210 mm (8.27")
Pump Weight with Motor and Housing:		24 kg (53 lb)

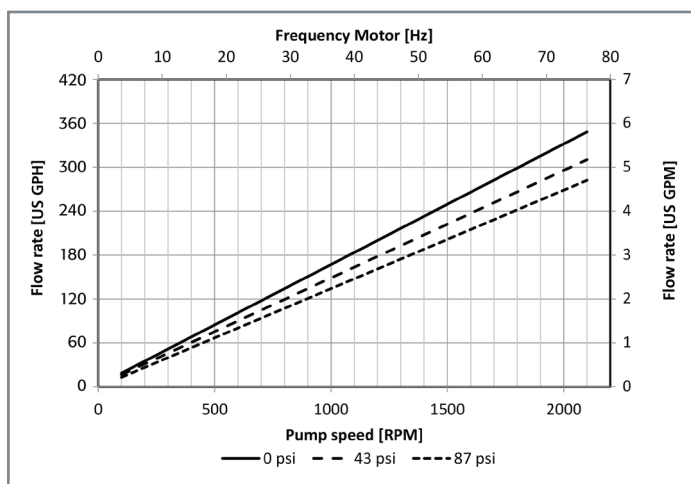
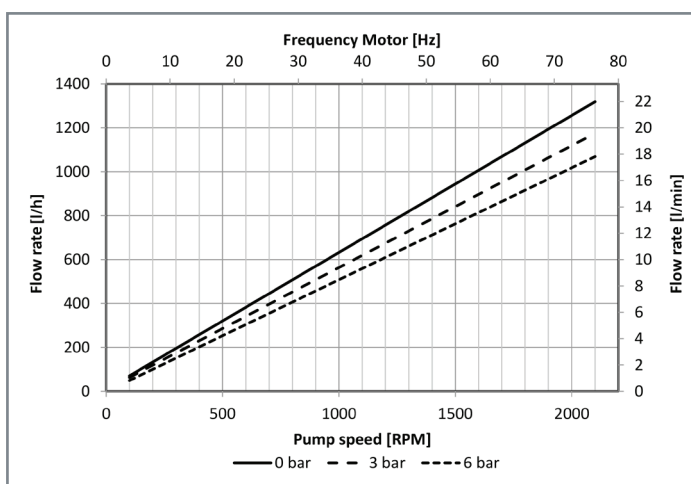
Other connection specifications, materials and motors available on request.

* When using pump with control box: 20 lph (0.333 lpm) and 40 lph (0.667 lpm)



Performance Charts

Eccentric Shaft: 5°



Depending on the selected motor/frequency drive combination, the motor frequency and the resulting pump speed might differ.